

# Anti-LY6G6D hlgG1 Antibody(20A12 .QNTv12)

## Product Information

GM-58917AB-10	10 µg
GM-58917AB-100	100 µg
GM-58917AB-1000	1 mg

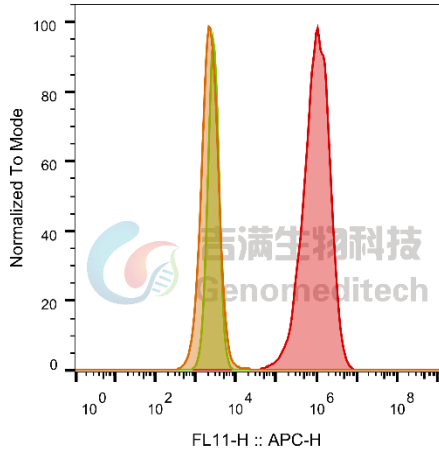
## Antibody Information

Species Reactivity	Human; Cynomolgus
Clone	20A12 .QNTv12
Source/Isotype	Monoclonal Human IgG1 /k
Application	Flow cytometry
Specificity	Detects LY6G6D.
Gene	LY6G6D
Other Names	G6D; NG25; LY6-D; MEGT1; C6orf23
Gene ID	58530(Human)、102119090(Cynomolgus)
Background	LY6G6D belongs to a cluster of leukocyte antigen-6 (LY6) genes located in the major histocompatibility complex (MHC) class III region on chromosome 6. Members of the LY6 superfamily typically contain 70 to 80 amino acids, including 8 to 10 cysteines. Most LY6 proteins are attached to the cell surface by a glycosylphosphatidylinositol (GPI) anchor that is directly involved in signal transduction.
Storage	Store at 2-8°C short term (1-2 weeks).Store at ≤ -20°C long term.Avoid repeated freeze-thaw.
Formulation	Phosphate-buffered solution, pH 7.2.
Endotoxin	< 1 EU/mg, determined by LAL gel clotting assay

## Data Examples

### Flow cytometry

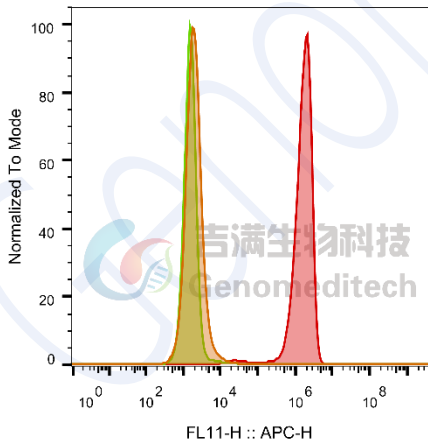
The recommended usage range is 0.5-4  $\mu\text{g}$  per test. H\_LY6G6D CHO-K1 Cell Line (Catalog # GM-C27572) was stained with Anti-LY6G6D hlgG1 Antibody (Catalog # GM-58917AB) or isotype control antibody, followed by anti-Human IgG APC-conjugated Secondary Antibody.



SampleID	Geometric Mean : FL11-H
CHO-K1 anti-LY6G6D+APC-2nd Ab	2330
CHO-K1 H_LY6G6D H_IgG+APC-2nd Ab	2805
CHO-K1 H_LY6G6D anti-LY6G6D+APC-2nd Ab	9.64E5

### Flow cytometry

The recommended usage range is 0.5-4  $\mu\text{g}$  per test. Cynomolgus\_LY6G6D HEK-293 Cell Line (Catalog # GM-C27574) was stained with Anti-LY6G6D hlgG1 Antibody (Catalog # GM-58917AB) or isotype control antibody, followed by anti-Human IgG APC-conjugated Secondary Antibody.



SampleID	Geometric Mean : FL11-H
HEK-293 anti-LY6G6D+APC-2nd Ab	1955
HEK-293 Cyno_LY6G6D H_IgG+APC-2nd Ab	1586
HEK-293 Cyno_LY6G6D anti-LY6G6D+APC-2nd Ab	1.46E6

Fig 1. 流式验证结果